

Go to our
Howard Miller webpage!



MANTEL & ACCENT CLOCKS

Limited Edition.....	56
Key-wound Chiming	56
Chiming	60
Accent.....	66

REID ACCENT
(SEE PAGE 67)

springclock.net
217-544-0840

MANTEL CLOCK COMMON FEATURES

Look for these symbols throughout pages 56-70

CLOCK MOVEMENTS:



High-precision, German-made, Kieninger® key-wound, triple-chime movement plays choice of Westminster, St. Michael, or Whittington 1/4, 1/2, and 3/4 chimes accordingly with full chime and strike on the hour.



High-precision, German-made, Kieninger® key-wound, Westminster chime movement plays 1/4, 1/2, and 3/4 chimes accordingly with full chime and strike on the hour. An industry exclusive dual-ratchet winding arbor ensures safe movement winding.



Quartz, triple chime Harmonic movement plays your choice of full Westminster or Ave Maria chimes with strike on the hour and 1/4, 1/2, and 3/4 chimes accordingly; Westminster chime and strike on the hour only; or Bim Bam chime on the hour only.



Quartz, dual-chime Kieninger® movement plays full Westminster or Ave Maria chimes with strike on the hour, with optional 4/4 chime feature which plays 1/4, 1/2, and 3/4 chimes accordingly.



Quartz, single-chime movement plays Westminster chime on the hour.

KEY FEATURES:



Automatic nighttime chime shut-off option.



Designed and assembled in the USA.

Go to our
Howard Miller webpage!



BRADLEY 630-260

H. 12.5" (32 cm), W. 22.75" (58 cm), D. 6.75" (17 cm)

Limited Edition Mantel Clock — only two thousand were crafted. Highly polished and buffed Windsor Cherry finish with fifteen different species of hardwood and veneers. Bookmatched Russian Walnut Burl on the Cherry case features a Movingue border with Ebony and Maple accent lines and decorative inlay consisting of Padauk, Silver Gum, Wenge, Magnolia, Beech, Avodire, Anegre, Pearwood, English Sycamore, and Kingwood. Ornate dial: pierced, polished brass cast center; applied satin black Arabic numerals; silver chapter ring. Cast center disc is numbered and inscribed "Limited Edition". Curved, beveled glass panels reveal intricate workings of the brass movement. Polished brass lines inside bottom of the case. Key-wound, triple-chime Kieninger® movement. An industry exclusive dual-ratchet winding arbor ensures safe movement winding. Automatic nighttime chime shut-off option and durable bronze bushings. Designed and assembled in Germany and in the USA.



BRADLEY



PARK AVENUE MANTEL 630-270

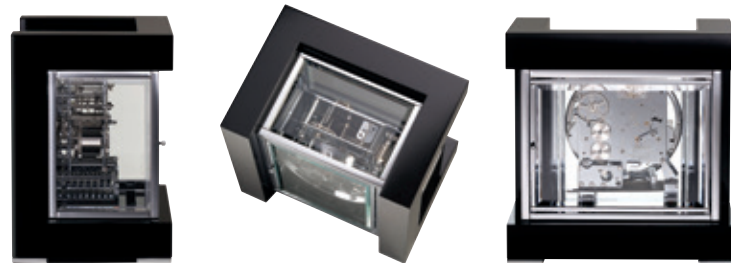
H. 10.25" (26 cm), W. 10" (25 cm), D. 7.25" (18 cm)

Limited edition key-wound mantel clock. Hand-rubbed, highly polished Gloss Black piano finish; polished chrome plated brass frames and feet. *The highly reflective shine and luster of the chrome case is the result of extensive polishing operations.* Acrylic dial: polished stainless steel chrome markers with black insets; polished stainless steel chrome hands with black insets; polished chrome finished bezel. Beveled glass throughout. View of the highly polished chrome plated brass movement. Front and back doors are hinged. Key-wound, triple-chime Kieninger® movement. Features a Swiss style escapement (11 jewels with screw balance), an 8-rod gong, and durable bronze bushings. Run time is seven days. An industry exclusive dual-ratchet winding arbor ensures safe movement winding. Chime silence and an automatic nighttime chime shut-off option between 10:00 pm and 7:15 am. Designed and assembled in Germany and in the USA. *With highly polished and reflective metal finishes, natural blemishes are normal.*



Beveled glass throughout the sides, back, and top of the clock allows in additional light.

PARK AVENUE
MANTEL



For similar styled clock, see
PARK AVENUE FLOOR CLOCKS, page 2



WEBSTER 613-559

H. 11" (28 cm), W. 18" (46 cm), D. 6" (15 cm)

Hand-rubbed, Windsor Cherry finish on select hardwoods and veneers. Presidential Collection™ clock features an arch molding, dentil molding on base, and brass feet. Two triangular, rare crotch mahogany and movingue overlays accent front. Key-wound, triple-chime Kieninger® movement. An industry exclusive dual-ratchet winding arbor ensures safe movement winding. Chime silence option and durable bronze bushings.

WEBSTER



THOMAS TOMPION



SAMUEL WATSON



THOMAS TOMPION 612-436

H. 18.25" (46 cm), W. 14.75" (37 cm), D. 8.25" (21 cm)
 Windsor Cherry finish on select hardwoods and veneers. Mr. Tompion was a founding member of England's famed Clockmaker's Guild of the 1630s. Rare olive ash burl veneers on door; hand-painted gold decorations on case. Glass sides and mirrored back reveal the movement. Brass-finished dial offers silver chapter ring. Key-wound, triple-chime Kieninger® movement. An industry exclusive dual-ratchet winding arbor ensures safe movement winding. Chime silence option and durable bronze bushings.



SAMUEL WATSON 612-429

H. 14.75" (37 cm), W. 10.75" (27 cm), D. 6.5" (17 cm)
 Hand-glazed, Windsor Cherry finish on select hardwoods and veneers. Named after the famous English clockmaker of the late 1600s. Brass-finished dial offers a silver chapter ring and decorative corner spandrels. Key-wound, triple-chime Kieninger® movement. An industry exclusive dual-ratchet winding arbor ensures safe movement winding. Chime silence option and durable bronze bushings.



LYNTON 613-182

H. 14.75" (37 cm), W. 10.75" (27 cm), D. 6.5" (17 cm)
 Hand-glazed, Windsor Cherry finish on select hardwoods and veneers. Polished brass-finished handle. Brass-finished dial offers a silver chapter ring and decorative corner spandrels. Key-wound, single-chime Kieninger® movement. An industry exclusive dual-ratchet winding arbor ensures safe movement winding. Chime silence option and durable bronze bushings.



GRAHAM BRACKET



LYNTON



GRAHAM BRACKET 612-437

H. 14.25" (36 cm), W. 10.5" (27 cm), D. 6.5" (17 cm)
 Windsor Cherry finish on select hardwoods and veneers. Classic bracket mantel clock with brass-finished dial, which offers a silver chapter ring and decorative corner spandrels. Key-wound, single-chime Kieninger® movement. An industry exclusive dual-ratchet winding arbor ensures safe movement winding. Chime silence option and durable bronze bushings.



EMPORIA



EMPORIA 630-266

H. 16.75" (43 cm), W. 12.5" (32 cm), D. 7.75" (20 cm)
 Cherry Bordeaux finish on select hardwoods and veneers. Front glass door features bookmatched jewel box white ash burl overlays, and decorative keystone and moldings. Ornate dial: polished brass-finished bezel; intricate center disk; silver chapter ring; applied brass Arabic numerals; black hands. Revolving, polished brass-finished pendulum below dial. Pendulum movement requires one AA sized battery (not included). Beveled glass panels offer view of intricate workings of the brass movement. Key-wound, single-chime Kieninger® movement. An industry exclusive dual-ratchet winding arbor ensures safe movement winding. Chime silence option and durable bronze bushings.



BARRETT 630-200

Windsor Cherry finish on select hardwoods and veneers.

BARRETT II 630-202

Oak Yorkshire finish on select hardwoods and veneers.

H. 10.75" (27 cm), W. 17.5" (44 cm), D. 6.5" (17 cm)

Tambour mantel clock features decorative egg-and-dart molding around the base, and rare olive ash burl overlays on front. Arched glass top allows view of the intricate solid brass clock movement. Polished brass-finished dial features applied Arabic numerals and chapter ring. Four brass-finished feet. Key-wound, single-chime Kieninger® movement. An industry exclusive dual-ratchet winding arbor ensures safe movement winding. Chime silence option and durable bronze bushings.



BARRETT II

BARRETT

Arched glass top allows a view of the interior.



CIRCA 630-212

H. 10.25" (26 cm), W. 15.25" (39 cm), D. 5.75" (15 cm)

Americana Cherry finish on select hardwoods and veneers with light distressing. Decorative reeded columns. Reproduction hardware adorns capitals, column bases, decorative rings, and front and rear feet. Veneer on the front resembles Carpathian elm burl. Aged dial with Roman numeral graphics. Key-wound, single-chime Kieninger® movement. An industry exclusive dual-ratchet winding arbor ensures safe movement winding. Chime silence option and durable bronze bushings.



BARRISTER 613-180

H. 11.75" (30 cm), W. 9.5" (24 cm), D. 5.25" (13 cm)

Mahogany finish on select hardwoods and veneers with inlays and an intricate oval of variegated maples and madrona burl. Warm-white dial with black numerals and hands, and brass-finished bezel. Fluted columns with wooden column caps. Key-wound, single-chime Kieninger® movement. An industry exclusive dual-ratchet winding arbor ensures safe movement winding. Chime silence option and durable bronze bushings.



BARRISTER



CIRCA



NEWLEY 630-198

H. 11.5" (29 cm), W. 22" (56 cm), D. 6.75" (17 cm)

Americana Cherry finish on select hardwoods and veneers. Tambour-style mantel clock features carved wood molding on base and bookmatched leaf and rosette patterns flank the bezel. Aged dial features Roman numerals, black spade hands, convex glass, and a hinged bezel. Key-wound, single-chime Kieninger® movement. An industry exclusive dual-ratchet winding arbor ensures safe movement winding. Chime silence option and durable bronze bushings.



NEWLEY



PALMER 630-220

Windsor Cherry finish on select hardwoods and rare elm burl veneers.

HADLEY 630-222

Oak Yorkshire finish on select hardwoods and rare elm burl veneers.

H. 11.25" (29 cm), W. 19" (48 cm), D. 6.75" (17 cm)

Tambour mantel clock with beaded molding on base, carved side scrolls, and elm burl veneered front panel. Lamb's-wool dial offers black Arabic numerals, black serpentine hands, and convex glass crystal. Key-wound, single-chime Kieninger® movement. An industry exclusive dual-ratchet winding arbor ensures safe movement winding. Chime silence option and durable bronze bushings.



HADLEY



PALMER



DOWNING 613-192

H. 10.75" (27 cm), W. 18" (46 cm), D. 6.5" (17 cm)

Rich Copley Mahogany finish on select hardwoods and veneers with exquisite ebony and maple fan marquetry. Arch molding on front and sides of case. Cream colored dial offers black Roman numerals. Beaded dentil molding on plinth base. Key-wound, triple-chime Kieninger® movement. An industry exclusive dual-ratchet winding arbor ensures safe movement winding. Chime silence option and durable bronze bushings.



DOWNING



WORTHINGTON 613-102

H. 10.75" (27 cm), W. 18" (46 cm), D. 6.5" (17 cm)

Oak Yorkshire finish on select hardwoods and veneers. Rare triangular olive ash burl overlays. Beaded dentil molding accents full plinth base. Cream Roman numeral dial with convex glass crystal and solid brass, hinged bezel. Key-wound, single-chime Kieninger® movement. An industry exclusive dual-ratchet winding arbor ensures safe movement winding. Chime silence option and durable bronze bushings.



WORTHINGTON



CARSON 630-216

H. 10.75" (27 cm), W. 18" (46 cm), D. 6.5" (17 cm)

Windsor Cherry finish on select hardwoods and veneers. Traditional tambour style features decorative top molding and triangular elm burl overlays. Beaded dentil molding wraps around sides and front above full plinth base. Off-white dial offers black Arabic numerals with serpentine hands. Convex glass crystal is framed by hinged, solid brass bezel. Key-wound, single-chime Kieninger® movement. An industry exclusive dual-ratchet winding arbor ensures safe movement winding. Chime silence option and durable bronze bushings.



MASON 630-161

H. 9" (23 cm), W. 20.5" (52 cm), D. 5" (13 cm)

Sleek, tambour-style mantel clock with Windsor Cherry finish on select hardwoods and veneers. Off-white dial with brass-finished bezel and Roman numerals. Key-wound, single-chime Kieninger® movement. An industry exclusive dual-ratchet winding arbor ensures safe movement winding. Chime silence option and durable bronze bushings.



CARSON



MASON



HILLSBOROUGH 630-152

Oak Yorkshire finish on select hardwoods and veneers. Bookmatched oak molding frames the dial with scrolls on the sides. Ivory dial offers Arabic numerals.



HAMPTON

HILLSBOROUGH

HAMPTON 630-150

Windsor Casual finish on select hardwoods and veneers and an aged dial with Roman numerals.

H. 11.25" (29 cm), W. 19" (48 cm), D. 6.75" (17 cm)

Beaded molding accents the front and sides. Quartz, dual-chime Kieninger® movement. Volume control, automatic nighttime volume reduction option, and automatic nighttime chime shut-off option. Requires two C sized batteries (not included).



FLEETWOOD 630-122

H. 10.75" (27 cm), W. 18" (46 cm), D. 6.5" (17 cm)

Windsor Cherry finish on select hardwoods and veneers. Decorative molding and triangular white ash burl overlays. Off-white dial with Arabic numerals and polished brass-finished bezel. Beaded dentil molding on base. Quartz, dual-chime Kieninger® movement. Volume control, automatic nighttime volume reduction option, and automatic nighttime chime shut-off option. Requires two C sized batteries (not included).



FLEETWOOD

MARQUIS



MARQUIS 635-115

H. 11.5" (29 cm), W. 18.25" (46 cm), D. 7" (18 cm)

Windsor Cherry finish on select hardwoods and veneers. Decorative inlay pattern of multiple hardwoods. Arched molding; carved wood molding on base. Off-white dial: black Arabic numerals, black serpentine hands, polished brass-tone bezel, and convex glass. Quartz, dual-chime Kieninger® movement. Volume control, automatic nighttime volume reduction option, and automatic nighttime chime shut-off option. Requires two C sized batteries (not included).



SOPHIE 635-152

H. 12.5" (32 cm), W. 20.5" (52 cm), D. 7.5" (19 cm)

Americana Cherry finish on select hardwoods and veneers. Carved leaf and rosette overlays and burl front panel. Lamb's-wool dial offers black Arabic numerals, black serpentine hands, and convex glass crystal. Quartz, triple-chime Harmonic movement. Volume control and automatic nighttime chime shut-off option. Requires two C sized batteries (not included).



GRANT 630-181

H. 11" (28 cm), W. 18" (46 cm), D. 6.5" (17 cm)

Windsor Cherry finish on select hardwoods and veneers. Decorative molding on base; detailed fan overlays frame dial. Brass-finished dial offers black Arabic numerals. Four brass-finished feet. Quartz, dual-chime Kieninger® movement. Volume control, automatic nighttime volume reduction option, and automatic nighttime chime shut-off option. Requires two C sized batteries (not included).



GRANT

SOPHIE



SHELDON 635-127

H. 11.75" (30 cm), W. 18" (46 cm), D. 6.75" (17 cm)

Americana Cherry finish on select hardwoods and veneers. Carved overlays frame the dial and decorate the cutout base, while an arched molding crowns the top. Off-white dial features black Arabic numerals, serpentine hands and convex glass crystal. Quartz, dual-chime Kieninger® movement. Volume control, automatic nighttime volume reduction option, and automatic nighttime chime shut-off option. Requires two C sized batteries (not included).

SHELDON

CHIMING MANTEL CLOCKS



MEDFORD



GRAHAM BRACKET III



MEDFORD 612-481

H. 11.5" (29 cm), W. 9.25" (24 cm), D. 4.5" (11 cm)

Windsor Cherry finish on select hardwoods and veneers. Classic English bracket clock offers brass-finished handle. Brass-finished Roman numeral dial with silver chapter ring. Quartz, dual-chime Kieninger® movement. Volume control, automatic nighttime volume reduction option, and automatic nighttime chime shut-off option. Requires two C sized batteries (not included).



GRAHAM BRACKET III 612-588

H. 14.25" (36 cm), W. 10.5" (27 cm), D. 6.5" (17 cm)

Bracket-style mantel clock features Windsor Cherry finish on select hardwoods and veneers. Brass-finished dial offers a silver chapter ring and decorative corner spandrels. Quartz, dual-chime Kieninger® movement. Volume control, automatic nighttime volume reduction option, and automatic nighttime chime shut-off option. Requires two C sized batteries (not included).



CLEO MANTEL 635-162

H. 24.25" (62 cm), W. 9.25" (24 cm), D. 4.75" (12 cm)

Chestnut finish on select hardwoods and veneers. Turned finial and seeded glass in door. Aged dial with worn black Roman numerals, wood bezel, black hands, and convex glass. Antique brass-finished pendulum bob suspended on a wood stick. Quartz, triple-chime Harmonic movement. Volume control and automatic nighttime chime shut-off option. Requires two C sized batteries (not included).



LORNA 635-170

H. 22.5" (57 cm), W. 10.5" (27 cm), D. 6.5" (17 cm)

Tuscany Cherry finish on select hardwoods and veneers. Fret cut grill over plain glass, turned columns, and decorative molding. Drawer in base; satin brass-finished pull. Circular brushed brass finished pendulum bob on wood stick. Off-white dial; black Roman numerals and hour markers; brushed brass-finished bezel; black hands. Quartz, triple-chime Harmonic movement. Volume control and automatic nighttime chime shut-off option. Requires two C sized batteries (not included).



CLEO MANTEL



LORNA



AKRON 635-125

H. 16.5" (42 cm), W. 12" (31 cm), D. 7" (18 cm)

Windsor Cherry finish on select hardwoods and veneers. Brass-finished handle, reeded columns with turned caps, reeded base frame, and fret side panels. Brushed-nickel finished dial: applied brass-tone, etched center disk; corner ornaments; raised brass-tone bezel; silver numeral ring with black floral pattern; applied brass-finished numerals; serpentine hands. Quartz, dual-chime Kieninger® movement. Volume control, automatic nighttime volume reduction option, and automatic nighttime chime shut-off option. Requires two C sized batteries (not included).



STAFFORD 635-169

H. 20" (51 cm), W. 11.25" (29 cm), D. 5.5" (14 cm)

Cherry Bordeaux finish on select hardwoods and veneers. Inverted V-matched teak wood veneer on front; fluted columns; polished brass-finished feet; gold detail on glass. Off-white dial: black Roman numerals; brushed brass-tone bezel; black serpentine hands. Circular brushed brass-finished grid pendulum. Quartz, triple-chime Harmonic movement. Volume control and automatic nighttime chime shut-off option. Requires two C sized batteries (not included).



AKRON



STAFFORD



MURRAY



LANGELAND



ARENDA MANTEL

For similar styled clocks, see
ARENDA FLOOR, page 10
ARENDA WALLS, page 26



MURRAY 635-150

H. 11" (28 cm), W. 12.25" (31 cm), D. 4.5" (11 cm)

Worn Black finish with brown undertones on select hardwoods and veneers. Applied rosettes and bun feet. Aged dial: black Arabic numerals; black spade hands; convex glass crystal. Quartz, triple-chime Harmonic movement. Volume control and automatic nighttime chime shut-off option. Requires two C sized batteries (not included).



ARENDA MANTEL 635-146

H. 16.5" (42 cm), W. 6.5" (16 cm), D. 4.5" (11 cm)

Tuscany Cherry finish on select hardwoods and veneers. Carved accents and turned finial. Antique brass-finished pendulum behind glass front panel. Aged dial offers black Roman numerals and filigree designs with black serpentine hands. Quartz, dual-chime Kieninger® movement. Volume control, automatic nighttime volume reduction option, and automatic nighttime chime shut-off option. Requires two C sized batteries (not included).



LANGELAND 635-133

H. 13.5" (34 cm), W. 10.5" (27 cm), D. 4.5" (11 cm)

Hampton Cherry finish on select hardwoods and veneers. Features reeded columns with carved top and bottom caps, and a decorative molding at the top and base. Lamb's-wool dial features Roman numerals and polished brass-finished bezel. Polished brass-finished pendulum. Quartz, dual-chime Kieninger® movement. Volume control, automatic nighttime volume reduction option, and automatic nighttime chime shut-off option. Requires two C sized batteries (not included).



CANDICE 635-131

Americana Cherry finish on select hardwoods and veneers.



CARLY 635-132

Golden Oak finish on select hardwoods and veneers.

H. 11.5" (29 cm), W. 9.75" (25 cm), D. 4.75" (12 cm)

Wood columns on all four corners and elegant burl on the front and top panels. Front beveled glass. Off-white dial with polished brass-finished bezel, Arabic numerals, and black hands. Unique polished brass-finished, cylindrical pendulum. Quartz, dual-chime Kieninger® movement. Volume control, automatic nighttime volume reduction option, and automatic nighttime chime shut-off option. Requires two C sized batteries (not included).



CANDICE



CARLY



LANNING 635-149

H. 13" (33 cm), W. 9.25" (24 cm), D. 4.5" (11 cm)

Hampton Cherry finish on select hardwoods and veneers. Carved column caps and a glass window topped with a carved overlay. Antique nickel-finished pendulum. Off-white dial offers black Roman numerals, antique nickel-finished bezel and black hands. Quartz, dual-chime Kieninger® movement. Volume control, automatic nighttime volume reduction option, and automatic nighttime chime shut-off option. Requires two C sized batteries (not included).



MIA MANTEL 635-187

H. 13.5" (34 cm), W. 10.25" (26 cm), D. 4.25" (11 cm)

Worn Black finish with red and brown undertones on select hardwoods and veneers. Fluted columns with raised beveled column caps. Flat glass encases dial and brushed antique brass-finished pendulum bob with brass-finished stick. Aged dial with aged black Roman numerals, black serpentine hands, and brushed antique-brass finished bezel. Quartz, single-chime movement counts the hour. Automatic nighttime chime shut-off. Requires three AA sized batteries (not included).



LANNING



MIA MANTEL

For similar styled clock, see
MIA WALL, page 25



BURTON 635-106

Golden Oak finish on select hardwoods and veneers.



BURTON II 635-107

Windsor Cherry finish on select hardwoods and veneers.

H. 10" (25 cm), W. 17" (43 cm), D. 5.5" (14 cm)
Decorative top molding and triangular burl overlays. Off-white dial features black Roman numerals, black serpentine hands, convex glass crystal, and a polished brass-tone bezel. Quartz, triple-chime Harmonic movement. Volume control and automatic nighttime chime shut-off option. Requires one C sized battery (not included).



BURTON II



BURTON



REDFORD



DESIREE



REDFORD 635-123

H. 7.25" (18 cm), W. 7.5" (19 cm), D. 3.25" (8 cm)

Windsor Cherry finish on select hardwoods and veneers. Rosette supports on base and polished brass-finished bun feet. Aged dial features black Roman numerals, black hands, polished brass-finished bezel, and convex glass. Quartz, single-chime movement counts the hour. Volume control and automatic nighttime chime shut-off option. Requires three AA sized batteries (not included).



DESIREE 635-138

H. 10.5" (27 cm), W. 12.25" (31 cm), D. 4.5" (13 cm)

Americana Cherry finish on select hardwoods and veneers. Features carved leaf and rosette overlays. Aged dial offers black Arabic numerals, black serpentine hands, and a convex glass crystal. Quartz, dual-chime Kieninger® movement. Volume control, automatic nighttime volume reduction option, and automatic nighttime chime shut-off option. Requires two C sized batteries (not included).



ANDREA 635-144

H. 9.75" (25 cm), W. 18" (46 cm), D. 5" (13 cm)

Hampton Cherry finish on select hardwoods and veneers. Decorative details include a carved base molding, bezel and side overlays with leaf pattern. Antique-brushed brass-finished pendulum behind glass window framed with carved overlay. Aged dial offers black Roman numerals, aged-gold carved center overlay, black serpentine hands and convex glass crystal. Quartz, dual-chime Kieninger® movement. Volume control, automatic nighttime volume reduction option, and automatic nighttime chime shut-off option. Requires two C sized batteries (not included).



ANDREA



ANTHONY 635-113

Oak Yorkshire finish on select hardwoods and veneers.



ALBRIGHT 635-114

Windsor Cherry finish on select hardwoods and veneers.

H. 8.5" (21 cm), W. 15.75" (40 cm), D. 5.25" (13 cm)
Beaded dentil molding on base, carved side scrolls, and burl veneered front panel. Aged dial offers black Arabic numerals, black serpentine hands, and convex glass crystal. Quartz, dual-chime Kieninger® movement. Volume control, automatic nighttime volume reduction option, and automatic nighttime chime shut-off option. Requires two C sized batteries (not included).



ALBRIGHT

ANTHONY



URBAN MANTEL 630-159

H. 12.5" (32 cm), W. 10.75" (27 cm), D. 4.5" (11 cm)

Urban Casual finish on select hardwoods and veneers. Flat-top pediment with a nickel-finished molding. White dial with nickel-finished bezel, hour markers, and hands. Quartz, dual-chime Kieninger® movement. Volume control, automatic nighttime volume reduction option, and automatic nighttime chime shut-off option. Requires two C sized batteries (not included).



URBAN MANTEL



URBAN MANTEL II



URBAN MANTEL II 630-246

H. 10" (26 cm), W. 9" (23 cm), D. 4.5" (12 cm)

Black Coffee finish on select hardwoods and veneers. White dial features nickel-finished Arabic numerals. Quartz, dual-chime Kieninger® movement. Volume control, automatic nighttime volume reduction option, and automatic nighttime chime shut-off option. Requires two C sized batteries (not included).



CASSIDY



STATESBORO



CASSIDY 635-198

H. 11.75" (30 cm), W. 9.75" (25 cm), D. 6.75" (17 cm)

Black Coffee finish on select hardwoods and veneers. Wooden front columns and column caps. Glass panels on front and sides. White dial with black Arabic numerals, black hands, and polished silver-tone bezel. Revolving, polished silver-finished disk style pendulum below the dial. Quartz, single-chime movement. Volume control. Requires two AA sized batteries and two C sized batteries (not included).



STATESBORO 635-167

H. 11.75" (30 cm), W. 9.5" (24 cm), D. 6.25" (16 cm)

Cherry Bordeaux finish on select hardwoods and veneers. Decorative olive ash burl finished overlays. Flat glass on front and sides. Gold detail on side glass panels. White dial with black Roman numerals, black hands, and polished-brass tone bezel. Revolving, polished brass-finished pendulum sits below the dial. Quartz single-chime movement. Volume control. Requires two AA and two C sized batteries (not included).



GARDNER 635-172

H. 11.75" (30 cm), W. 8.75" (22 cm), D. 5.75" (15 cm)

Brushed aluminum corners and polished silver-tone accents. Faux Macassar ebony-finished top and base. Brushed aluminum dial with applied circular, brushed aluminum numeral ring; black Roman numerals and hour markers; satin silver center; and glass crystal. Polished silver-tone finished revolving pendulum. Quartz single-chime movement. Volume control. Requires two AA and two C sized batteries (not included).



GARDNER



HOLDEN MANTEL

For similar styled clock, see **HOLDEN WALL**, page 28



HOLDEN MANTEL 635-186

H. 13.75" (35 cm), W. 9.75" (25 cm), D. 4.5" (11 cm)

Espresso finish on select hardwoods and oak veneers. Features mother of pearl trim beneath flat glass and framed by two mirrored lines. White dial with black bar hour markers, black hands, and silver-finished seconds hand. Polished chrome-finished pendulum bob with silver-finished stick. Quartz, single-chime movement counts the hour. Automatic nighttime chime shut-off. Requires four AA sized batteries (not included).



CAMERON II MANTEL



CAMLON MANTEL

For similar styled clock, see **CAMLON FLOOR**, page 19



CAMERON II MANTEL 635-182

H. 10.75" (27 cm), W. 8.75" (22 cm), D. 4.25" (11 cm)

Espresso finish on select hardwoods and veneers. Polished chrome plated metal-wrapped base. White dial with black bar hour markers and minute track, black hands, and polished chrome-finished bezel, behind flat glass. Quartz, triple-chime Harmonic movement. Volume control and automatic nighttime chime shut-off option. Requires two C sized batteries (not included).



CAMLON MANTEL 635-183

H. 11" (28 cm), W. 9.25" (23 cm), D. 4.25" (11 cm)

Weathered, Driftwoods finish on select hardwoods and veneers, inspired by the natural yet rustic nature of reclaimed woods. Soft black dial with polished chrome-finished Arabic numerals, hour and minute hands, and bezel, is encased beneath flat glass. Quartz, triple-chime Harmonic movement. Volume control and automatic nighttime chime shut-off option. Requires two C sized batteries (not included).

CHIMING MANTEL CLOCKS



ZOLTAN



BAXFORD



CALLAHAN



ZOLTAN 635-178

H. 10.5" (27 cm), W. 8" (20 cm), D. 5" (13 cm)

7.25" wide polished chrome bezel. Walnut finished veneer wood base. Chrome posts and metal bottom base. White dial with black Roman numerals and black hands. Quartz, triple-chime Harmonic movement. Volume control and automatic nighttime chime shut-off option. Requires two C sized batteries (not included). *With highly polished and reflective metal finishes, natural blemishes are normal.*



BAXFORD 635-179

H. 14.5" (37 cm), W. 7.75" (20 cm), D. 4.75" (12 cm)

7.25" wide polished chrome bezel, chrome posts, chrome metal bottom base, and Driftwood finished wood base. Large, black dial features chrome-finished Roman numerals and chrome-finished hour and minute hands. Quartz, triple-chime Harmonic movement. Volume control and automatic nighttime chime shut-off option. Requires two C sized batteries (not included). *With highly polished and reflective metal finishes, natural blemishes are normal.*



CALLAHAN 635-159

H. 8.75" (22 cm), W. 18" (46 cm), D. 4.5" (11 cm)

Black Coffee finish on select hardwoods and veneers. Curved brushed nickel finished metal sides. White dial with embossed, satin nickel finished Arabic numerals and hour markers; black minute track; wood bezel; satin nickel hands; and convex glass crystal. Quartz, triple-chime Harmonic movement. Volume control and automatic nighttime chime shut-off option. Requires two C sized batteries (not included).



NICHOLAS 635-100

Golden Oak finish on select hardwoods and veneers and Arabic numerals.

CHRISTOPHER 635-101

Windsor Cherry finish on select hardwoods and veneers and Roman numerals.

H. 8.5" (22 cm), W. 17.75" (45 cm), D. 4.75" (12 cm)
Off-white dial with black numerals, brass second hand, polished brass-finished bezel, and convex glass crystal. Quartz, single-chime movement counts the hour. Volume control and automatic nighttime chime shut-off feature. Requires three AA sized batteries (not included).



CHRISTOPHER

NICHOLAS



ADELAIDE



ADELAIDE 635-130

H. 9" (23 cm), W. 15.5" (39 cm), D. 4" (10 cm)

Sculpted wrought-iron frame with antique warm-grey finish, sits on a Windsor Cherry finished base. Decorative molding wraps around the base. Aged dial with black Roman numerals, antique-finished serpentine hands and convex glass crystal. Quartz, single-chime movement counts the hour. Automatic nighttime chime shut-off. Requires three AA sized batteries (not included).



TARA 635-122

H. 10" (25 cm), W. 6.5" (17 cm), D. 3.25" (8 cm)

Windsor Cherry finish on select hardwoods and veneers. Decorative brass-finished handle, polished brass-finished bezel, and polished brass-finished bun feet. Off-white dial with black Roman numerals, black hands, and convex glass. Quartz, single-chime movement counts the hour. Volume control and automatic nighttime chime shut-off. Requires three AA sized batteries (not included).



MYRA 635-121

H. 8.75" (22 cm), W. 7" (18 cm), D. 3.25" (8 cm)

Oak Yorkshire finish on select hardwoods and veneers. Decorative top molding and polished-brass finished bun feet. Off-white dial features black Arabic numerals, black hands, polished brass-finished bezel and convex glass. Quartz, single-chime movement plays Westminster chimes counts the hour. Volume control and automatic nighttime chime shut-off. Requires three AA sized batteries (not included).



TARA



MYRA

TIME SURVEYOR ACCENT 635-192

H. 26.25" (67 cm), W. 11.5" (29 cm), D. 10.75" (27 cm)
 Tripod design with metal accents finished in antique brass. Rustic Cherry finish on select hardwoods and veneers is lightly distressed for an aged appearance. Aged dial features black Roman numerals, separate seconds track with Arabic numerals at the "6" position, black finished hands, and glass crystal. Quartz movement requires two AA sized batteries (not included).



TIME SURVEYOR ACCENT



TIME SURVEYOR II ACCENT

TIME SURVEYOR II ACCENT 635-211

H. 22.5" (57 cm), W. 14.5" (37 cm), D. 12.25" (31 cm)
 Tripod clock with metal accents finished in polished nickel and legs with Black Satin finish on select hardwoods. White dial features black Roman numerals and minute track, black finished hands and glass crystal. Deep polished nickel-finished head can be adjusted up and down. Quartz movement requires one AA size batteries (not included). *With highly polished and reflective metal finishes, natural blemishes are normal.*

For similar styled clock, see
TIME SURVEYOR FLOOR, page 17

PULLEY TIME ACCENT 635-210

H. 24.25" (62 cm), W. 12.75" (32 cm), D. 9.25" (23 cm)
 Metal pulley clock finished in antique brass features a fixed counterweight and pulley. Clock head appears to be suspended from a fixed cable. Aged dial features black Roman numeral and outer minute track with red Arabic numerals. Glass crystal. Black hands. Full felt bottom. Quartz movement requires one AA sized battery (not included).



PULLEY TIME ACCENT

DIAL ON BOTH SIDES



JENKINS



JENKINS 635-155

H. 21" (53 cm), W. 10" (25 cm), D. 7.25" (18 cm)
 Two-sided mantel clock, finished in antique brushed brass, suspended from a bent metal scroll stand on a cast base. Aged parchment dial features black Arabic numerals, black hands and glass crystal. Full felt bottom. Quartz movement requires two AA sized batteries (not included).



RUTHIE



CHILDRESS

RUTHIE 635-206

H. 19.25" (49 cm), W. 8.75" (22 cm), D. 4.25" (11 cm)
 Arched top metal clock finished in distressed antique red for an aged appearance. Decorative finial with a folding handle and faux bells. An open window reveals an antique brass finished pendulum. Aged dial with aged, dark brown Arabic numerals, minute track with red dots at the hour positions, black spade hands, and glass crystal. Quartz movement requires two AA sized batteries (not included).

CHILDRESS 635-222

H. 27" (69 cm), W. 21.5" (55 cm), D. 6.75" (17 cm)
 Oversized, metal clock features 19.75" round metal case finished in light charcoal, supported on a detailed metal base. Aged white dial with aged black Arabic numerals and minute track, black hands, and flat glass crystal. Quartz movement requires one AA sized battery (not included).

ANDOVER 635-171

H. 9.25" (23 cm), W. 8.75" (22 cm), D. 3.75" (10 cm)
 Cherry Bordeaux finish on select hardwoods and veneers. Case features a camphor burl front panel, fluted side column detailing, and brass-tone bun feet. Off-white dial with black Roman numerals. Quartz movement requires one AA sized battery (not included).



ANDOVER

KAYLA 635-112

H. 12" (30 cm), W. 9.5" (24 cm), D. 4.75" (12 cm)
 Windsor Cherry finish, fluted columns, and a polished-brass-tone bezel. Two felt-lined jewelry drawers. Off-white dial with black Roman numerals and hands, and a convex glass crystal. Quartz movement requires one AA sized battery (not included).



Two felt-lined drawers for storage.



KAYLA



TAMSON

EMMA

TAMSON 635-181

H. 8.25" (21 cm), W. 13.75" (35 cm), D. 2.75" (7 cm)
 Worm teal blue finish. Convex glass crystal showcases an aged dial with aged and worn Arabic numerals and black spade hands. Felt bottom. Quartz movement requires one AA sized battery (not included).

EMMA 635-213

H. 8.25" (21 cm), W. 13.75" (35 cm), D. 2.75" (7 cm)
 Warm gray finish on select hardwoods and veneers. White dial includes black Arabic numerals, black spade hands, and convex glass crystal. Quartz movement requires one AA sized battery (not included).

HUMPHREY 635-143

H. 8.25" (21 cm), W. 13.75" (35 cm), D. 3" (8 cm)
 Hampton Cherry finish on select hardwoods and veneers. Aged dial with black Roman numerals, spade hands, and a convex glass crystal. Quartz movement requires one AA sized battery (not included). Felt pads on bottom.



HUMPHREY



TALIA

TALIA 635-190

H. 9.25" (23 cm), W. 6" (15 cm), D. 5.5" (14 cm)
 H. 10.25" (26 cm) with ring extended
 Antique Oak finish on select hardwoods and veneers. Aged dial with black Roman numerals, black hands, and glass crystal. Quartz movement requires one AA size battery (not included).

MERRICK



REID ACCENT

MERRICK 635-189

H. 12.25" (31 cm), W. 9" (23 cm), D. 4" (10 cm)
 Warm gray finished case on select hardwoods and veneers and metal base finished in charcoal with silver edging. Aged black dial has white Roman numerals and minute track, antique white spade style hands, and flat glass crystal. Quartz movement requires one AA size battery (not included).

REID ACCENT 635-215

H. 10.75" (27 cm), W. 8.5" (22 cm), D. 4.75" (12 cm)
 Wooden accent clock. Translucent satin espresso stained finish; aged, charcoal finished metal base. Dial features aged, charcoal-finished, wrought-iron Roman numerals and bar hour markers suspended in front of a machined steel background. Aged charcoal-finished hands. Felt pads. Quartz movement requires one AA sized battery (not included).

For similar styled clock, see
REID GALLERY WALL, page 54

REESE ACCENT 635-185

H. 9.5" (24 cm), W. 9.5" (24 cm), D. 4" (10 cm)

Black Coffee finish on select hardwoods and oak veneers. Polished chrome-finished, plated metal feet. Flat glass over dial includes black border with white dot pattern and polished black and chrome-finished square embellishments. White dial with applied polished chrome-finished Arabic numerals and bar hour markers, black hands, and silver-finished seconds hand. Quartz movement requires one AA sized battery (not included).



REESE ACCENT



MEGAN

For similar styled clock, see REESE WALL, page 28

MEGAN 635-191

H. 8" (20 cm), W. 9" (23 cm), D. 3.25" (8 cm)

Piano Walnut finish on select hardwoods and veneers. Features a curved front, two brushed aluminum panels with polished sides, and polished aluminum feet. Glass dial, with black Roman numerals, black hands, and frosted center; satin silver background. Dial is attached by polished aluminum finished bar supports with polished aluminum caps. Felt on bottom of feet. Quartz movement requires one AA size battery (not included).

BATAVIA 635-177

H. 9" (23 cm), W. 7.75" (20 cm), D. 3.25" (8 cm)

Macassar ebony finish. Polished silver finished accents and round satin silver-tone feet. Dial features a brushed silver-tone numeral ring, black Roman numerals, polished silver finished skeleton movement, separate seconds track above the "6" position, silver hands with black stripe, and flat glass with silver and black accents. Quartz movement requires one AA sized battery (not included).



BATAVIA



ASTON

ASTON 635-184

H. 11" (28 cm), W. 8.25" (21 cm), D. 3.75" (10 cm)

Macassar ebony finished case with Black Satin top and base and polished silver finished accents. A brushed silver-finished panel behind flat glass holds the clock dial with black Arabic numerals and polished silver and black finished bezel. Thermometer (indoor temperature) and hygrometer (relative humidity) below the dial include circular brushed dials. Quartz movement requires one AA sized battery (not included).



DRAYSON



MAXINE

DRAYSON 635-201

H. 8.75" (22 cm), W. 9" (23 cm), D. 2.25" (6 cm)

Polished chrome-finished metal clock features a round metal case supported between two metal posts on a multi-stepped base. White dial with black Roman numerals, black spade hands and convex glass crystal. Full felt bottom. Quartz movement requires one AA sized battery (not included). *With highly polished and reflective metal finishes, natural blemishes are normal.*

MAXINE 635-202

H. 12" (30 cm), W. 7.75" (20 cm), D. 5.25" (13 cm)

Polished chrome-finished metal clock features a multi-stepped base and a folding rectangular top handle with a decorative stem. White dial with black Roman numerals and minute track, black hands and flat glass crystal. Full felt bottom. Quartz movement requires one AA sized battery (not included). *With highly polished and reflective metal finishes, natural blemishes are normal.*

GLOBAL TIME 635-212

H. 11.5" (29 cm), W. 8.75" (22 cm), D. 5" (13 cm)

World time metal clock displays local time. Deep, polished nickel finished case and white dial with black Roman numerals. Four Roman numeral dials located at the 12, 3, 6 and 9 positions display time in New York, Paris, London and Tokyo. Glass crystal. Black hands; red seconds hand. Quartz movement requires five AA sized batteries (not included). *With highly polished and reflective metal finishes, natural blemishes are normal.*

FINN 635-216

H. 8.5" (22 cm), W. 8.5" (22 cm), D. 3" (8 cm)

Square, metal, open-framed clock features aged nickel finish with grind marks and distressing. Blackened steel finished dial with round, silver-tone hour markers; spun nickel-finished markers at the 12, 3, 6 and 9 positions; and satin-silver-tone hands. Rubber pads on bottom of frame. Quartz movement requires one AA sized battery (not included).



GLOBAL TIME



FINN



RYLAND



SUNDIE



RYLAND 635-217

H. 10.5" (27 cm), W. 7.25" (18 cm), D. 4" (10 cm)

Metal clock with brushed, aged silver-finish sits on an aged charcoal finished wrought iron base. Dial includes aged off-white center and aged black numeral ring with aged white Arabic numerals and bar style hour markers, aged gold bands and flat glass crystal. Antique gold-finished hands and pendulum. Felt pads on bottom of feet. Quartz movement requires two AA sized batteries (not included).

SUNDIE 635-220

H. 15.5" (39 cm), W. 11.5" (29 cm), D. 5.5" (14 cm)

Metal clock features an antique brass finished case that sits on an aged black wrought iron stand. Aged black dial with two-tone gold Roman numerals, gold minute track, antique brass spade hands, and flat glass crystal. Quartz movement requires one AA sized battery (not included).

VERNAZZA 635-193

H. 11.25" (29 cm), W. 8.25" (21 cm), D. 6.75" (17 cm)

Metal spotlight-style accent clock with antique nickel finished case and antique brass finished bracket, base and accents. Case can be adjusted vertically. White dial with black Roman numerals, black hands, red seconds hand, and glass crystal. Felt bottom. Quartz movement requires one AA size battery (not included).



VERNAZZA



VERCELLI ACCENT

VERCELLI ACCENT 635-141

H. 12" (30 cm), W. 7.25" (18 cm), D. 4.25" (11 cm)

Wrought-iron clock finished in aged iron with antique-gold accents. Cast polystone dial with cast hour markers and raised outer edge. Hands and pendulum are aged iron. Quartz movement requires one AA sized battery (not included).



INDIGO



REY

INDIGO 635-209

H. 9.75" (25 cm), W. 8.75" (22 cm), D. 3.75" (10 cm)

Metal clock with a deep, bent iron frame with aged silver finish. Dial features wrought-iron Roman numerals and bar hour markers suspended in front of a machined steel background. Aged silver-finished hands. Felt pads. Quartz movement requires one AA sized battery (not included).

REY 635-218

H. 9.75" (25 cm), W. 8.75" (22 cm), D. 3.75" (10 cm)

Metal clock with circular and wedged metal shapes. Clock sits on a curved base and is finished in brown with reddish undertones. Gold highlights on front of frame and hour markers. Flat center disk of dial is joined to outer case by metal plates, which also serve as hour markers. Antique gold-finished hands. Quartz movement requires one AA sized battery (not included).

SEELEY 635-208

H. 9.5" (24 cm), W. 16.5" (42 cm), D. 2.5" (6 cm)

Metal clock features a bent iron tambour frame with an aged silver finish. Blackened, machined steel dial with contrasting aged silver-finished hands. Felt pads. Quartz movement requires one AA sized battery (not included).



SEELEY



HUGO

HUGO 635-219

H. 10.25" (26 cm), W. 8.25" (21 cm), D. 3.5" (9 cm)

Arched, metal clock finished in charcoal gray with silver edging. Dial features charcoal gray finished bar style hour markers suspended in front of a natural machined steel finished background, which includes grind marks and distressing. Charcoal gray finished hands and pendulum. Quartz movement requires two AA sized batteries (not included).

CRAMDEN 635-195

H. 10.75" (27 cm), W. 8.75" (22 cm), D. 4.75" (12 cm)

Two-sided metal accent clock with rusted, antique black finish for an aged appearance. Aged dial on each side with aged black Arabic numerals, charcoal gray hands, and glass crystal. Each clock runs with a separate movement. Foam pad on bottom. Quartz movement requires two AA sized batteries (not included).



GRAVELYN

CRAMDEN

GRAVELYN 635-197

H. 13" (33 cm), W. 11" (28 cm), D. 4.25" (11 cm)

Metal accent clock with bent metal top handle and legs finished in antique iron. Rustic wooden base with natural light brown finish. Dial includes aged parchment background with aged Arabic numerals, flat black hands, flat glass crystal, and antique iron bezel with decorative rivets. Felt covered bottom. Quartz movement requires one AA sized battery (not included).



ARDIE



COLLINS

ARDIE 635-199

H. 12.25" (31 cm), W. 7.25" (18 cm), D. 5.25" (13 cm)

Metal clock finished in antique black with gray and rusty brown undertones for an aged appearance. Distressed antique white dial features aged and distressed black Arabic numerals, black spade hands and a convex, shatter-resistant crystal. Foam pads. Quartz movement requires one AA sized battery (not included).

COLLINS 635-194

H. 12.75" (32 cm), W. 9" (23 cm), D. 5" (13 cm)

Antique black finished metal clock features round ball feet and decorative, faux bell on top. Aged dial with charcoal Arabic numerals and minute track, charcoal gray finished spade hands, and glass crystal. Quartz movement requires one AA sized battery (not included).

LOMAN 635-200

H. 14.25" (36 cm), W. 6.5" (17 cm), D. 4" (10 cm)

6.5" diameter metal clock finished in antique black with decorative top ring hangs from a 14.25" tall stand. Aged white dial features aged and distressed black Roman numerals, black spade hands and flat glass crystal. Quartz movement requires one AA sized battery (not included).



LOMAN

SENNA 635-221

H. 11.5" (29 cm), W. 11.25" (29 cm), D. 5.75" (15 cm)

Metal clock features a flanged, round metal case and curved base finished in antique silver. Aged black dial with white Roman numerals, white hands and flat glass crystal. Quartz movement requires one AA sized battery (not included).



SENNA

HARRIET 635-207

H. 11.5" (29 cm), W. 8.5" (22 cm), D. 2.75" (7 cm)

Metal clock features distressed antique white finish for an aged appearance. Decorative faux bells and hammer plus a fixed top handle. Aged dial with aged, black Roman numerals, black spade hands and glass crystal. Quartz movement requires one AA sized battery (not included).



HARRIET

SAXONY 635-214

H. 13.5" (34 cm), W. 9.75" (25 cm), D. 3" (8 cm)

Aged metal clock features distressed Antique White finish. Aged, off-white dial includes black Arabic numerals, black spade hands, and flat glass crystal. Quartz movement requires one AA sized battery (not included).



SAXONY

WOOD FINISHES

Howard Miller wood finishes are formulated to gently enhance the natural beauty of select woods and are meticulously applied by the adept hands of our experienced craftspeople. When you examine a Howard Miller finish, you will not only be able to see the beauty, but feel the quality of the finish as well.



AGED AUBURN
(Wire Brushed and Distressed)



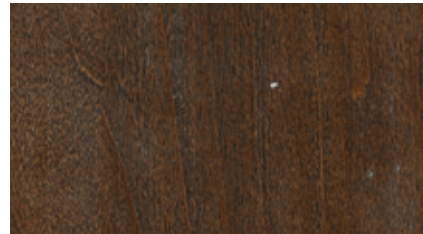
AGED GREY
(Wire Brushed and Distressed)



AGED LINEN
(Wire Brushed and Distressed)



AGED NATURAL
(Wire Brushed)



AGED UMBER
(Wire Brushed and Distressed)



ANTIQUE GREY
(Distressed)



ANTIQUE WHITE
(Distressed)



AMERICANA CHERRY
(Various Levels of Distressing)



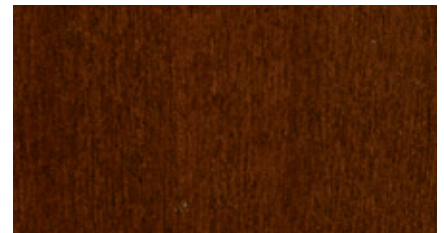
BLACK COFFEE



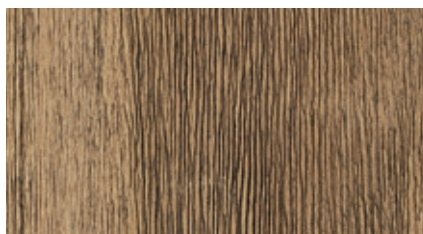
BLACK SATIN



CAMDEN OAK



CHERRY BORDEAUX



DRIFTWOOD
(Heavily Wire Brushed)



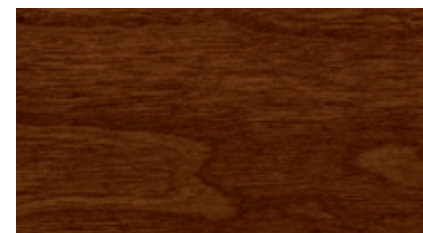
EMBASSY CHERRY
(Lightly Distressed)



ESPRESSO



GOLDEN OAK



HAMPTON CHERRY
(Various Levels of Distressing)



HERITAGE OAK

*These wood finishes are intended for use as a general color reference. Due to the natural color variations that occur with wood, and the variables of 4-color process printing, the finishes represented here may vary from actual manufactured products.

WOOD FINISHES

Howard Miller wood finishes are formulated to gently enhance the natural beauty of select woods and are meticulously applied by the adept hands of our experienced craftspeople. When you examine a Howard Miller finish, you will not only be able to see the beauty, but feel the quality of the finish as well.



HIGH GLOSS BLACK



HIGH GLOSS WHITE



LEGACY OAK



NATURAL GRAY



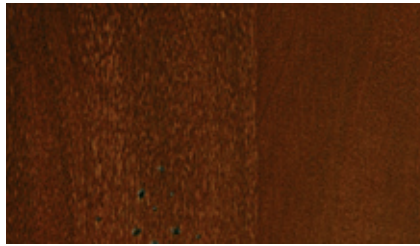
NATURAL WALNUT



SEASIDE GRAY



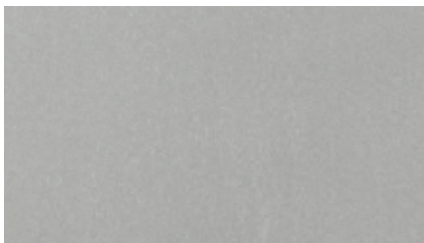
OAK YORKSHIRE



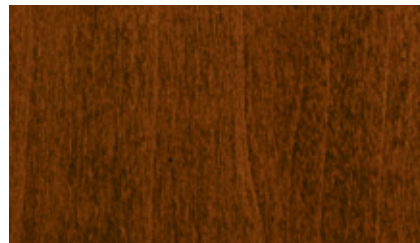
RUSTIC CHERRY
(Heavily Distressed)



SARATOGA CHERRY
(Various Levels of Distressing)



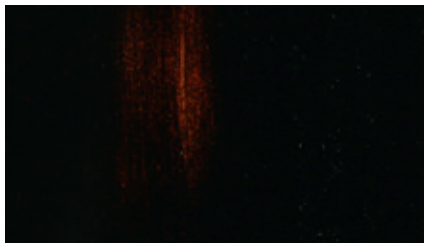
SILVER



TUSCANY CHERRY



WINDSOR CHERRY
(Various Levels of Distressing)



WORN BLACK WITH BROWN UNDERTONES
(Various Levels of Distressing)

*These wood finishes are intended for use as a general color reference. Due to the natural color variations that occur with wood, and the variables of 4-color process printing, the finishes represented here may vary from actual manufactured products.

WOOD FINISHES

Howard Miller wood finishes are formulated to gently enhance the natural beauty of select woods and are meticulously applied by the adept hands of our experienced craftspeople. When you examine a Howard Miller finish, you will not only be able to see the beauty, but feel the quality of the finish as well.



No Distressing



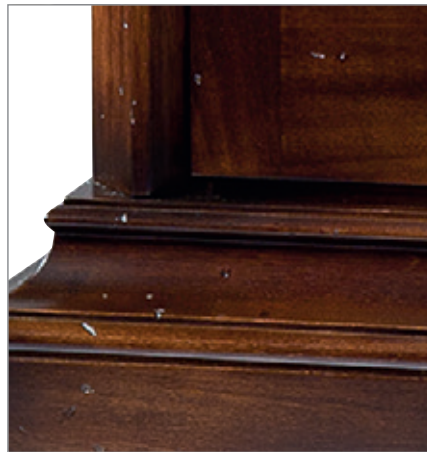
Lightly Distressed for an aged appearance



Moderately Distressed with shallow dents for an aged appearance



Heavily Distressed with light and deep dents, for an aged appearance



Heavily Distressed with deep dents, gouges and chisel markings for an aged appearance



Heavily Distressed by wire brushing, scribes, and worm holes for natural, rustic appearance



Heavily Distressed with deep dents, gouges and worm holes for an aged appearance



Heavily Wire Brushed for a natural, reclaimed wood appearance



Significantly Distressed with deep gouges, scribes, and rasping for an aged aesthetic

*These wood finishes are intended for use as a general color reference. Due to the natural color variations that occur with wood, and the variables of 4-color process printing, the finishes represented here may vary from actual manufactured products.